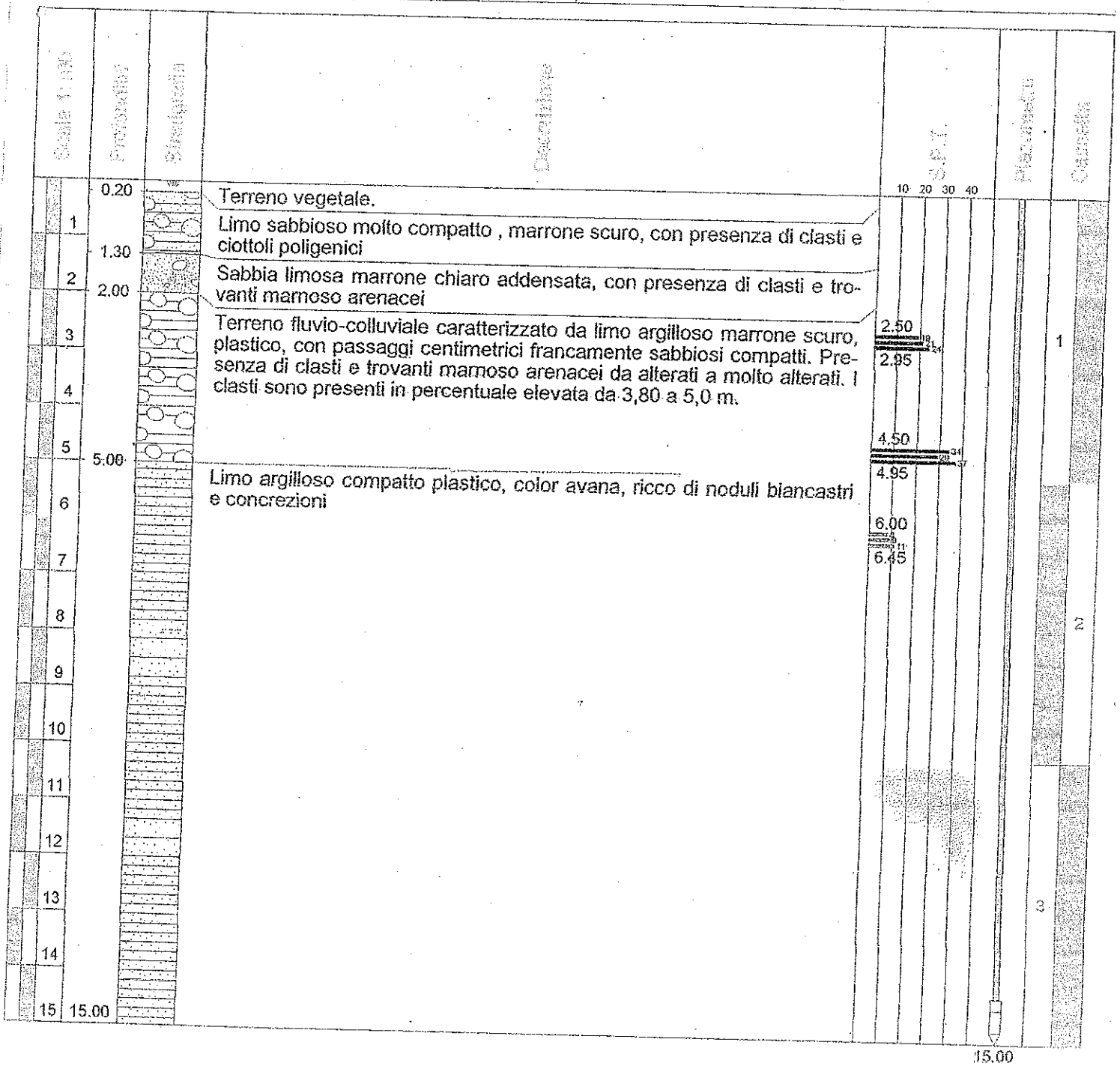


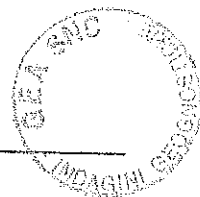
GEA s.n.c. - indagini geognostiche GEA s.n.c.		N. sondaggio S2
Committente Geom. Sardelli		Scala sondaggio 1:100
Perforatore		D.L. Dott. Geol. Corti Fabio
Cantiere Calcinaia - S. Casciano V. di Pesa		Quota (p.c.)
Metodo perf. Carotaggio Continuo		Data ultimazione 26/09/2005



15.00

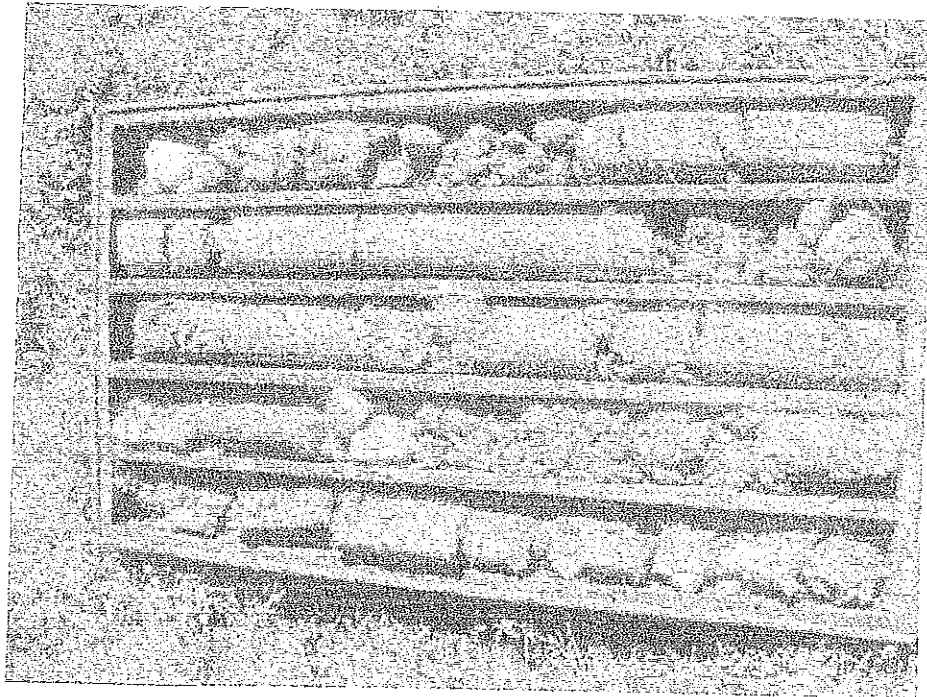
ALLEGATO II

DOCUMENTAZIONE FOTOGRAFICA

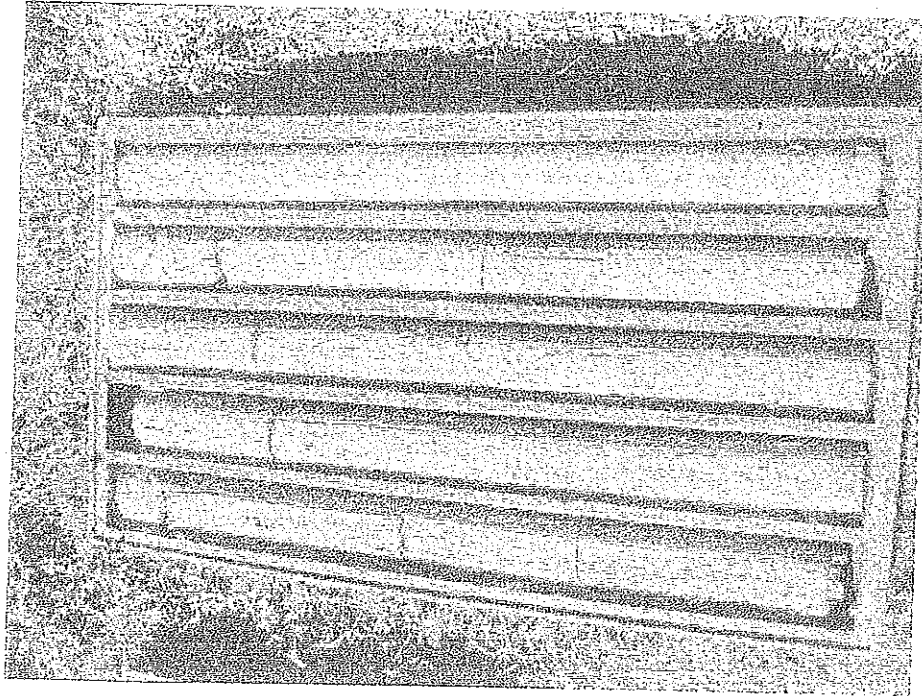


Calcinaia, San Casciano (FI).

Geom. Sardelli



Sondaggio n°1 - da p.c. a 5.00 m.



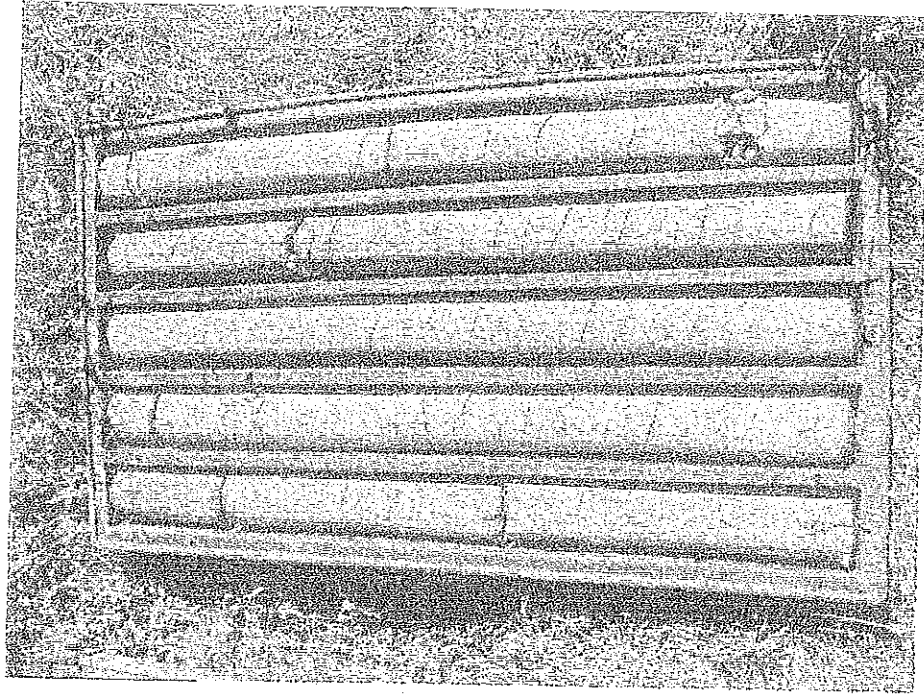
Sondaggio n°1 - da 5.00 m. a 8.50 m.



GEA s.n.c. - Via D. Minzoni, 9 - 51013 Chiesina Uzzanese (PI) - Tel e fax 057248327 - P. IVA e C.F. 01202980478

Calcinaia, San Casciano (FI).

Geom. Sardelli



Sondaggio n°1 - da 10.00 m. a 15.00 m.

GEA s.n.c. - Via D. Minzoni, 9 - 51013 Chiesina Uzzanese (PT) - Tel e fax 057248327 - P. IVA e C.F. 01202980478